

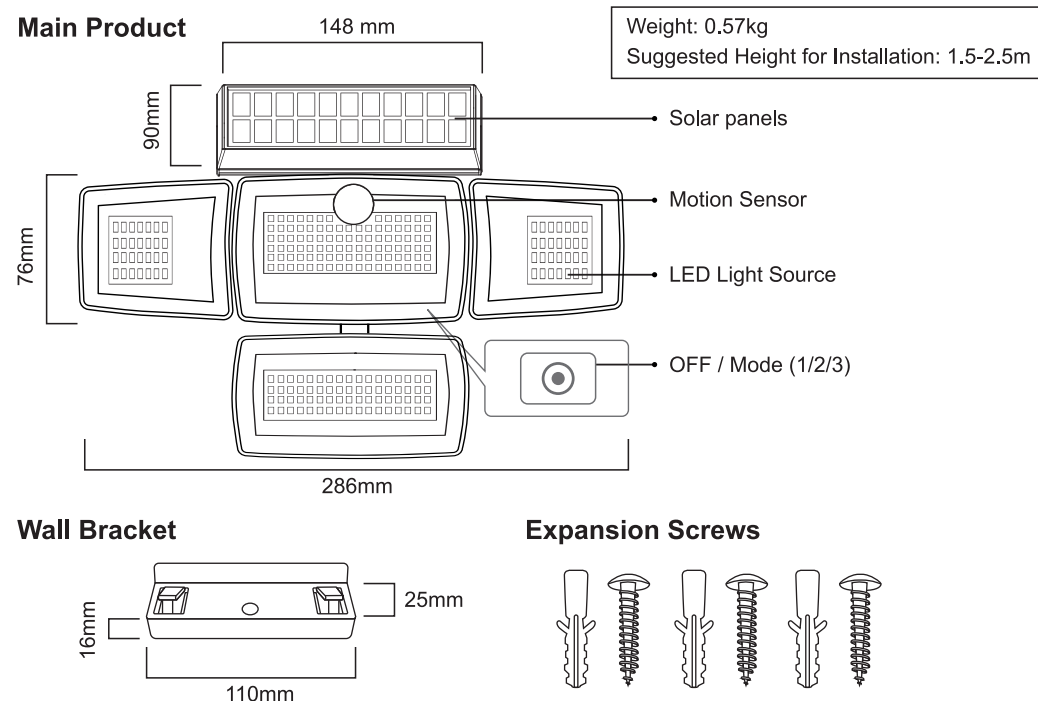
Xiongli Decoration Co., Ltd	
Size:	148.5 (W) x 210 (H)mm
Color:	■ 100K ■ Die-cut
Material:	Paper
Coating:	Matt
Item:	144740
Date:	30-10-2023
Designer:	Joseph / Johnson

High Light Solar Security Sensor Light PLU-144740

Specification

LED Qty	253PCS
Model Number	PLU-144740
Colour	Daylight White
Colour Temperature	6500K
Detector Type	Pyroelectric Infrared Sensor
Waterproof	IP65
Battery	18650 3.7V 1800mAh Li-ion Rechargeable
Beam Angle	270°
Ta	-15°C ~ 40°C
Illumination Duration Per Detection	20s
Max. Detection Range	Up to 3 ~ 5m (<24°C)
Lighting Modes (3 Modes)	1. Motion sensor high-light mode 2. Motion sensor high-light and slight light mode 3. Slight light stay-on mode at dusk

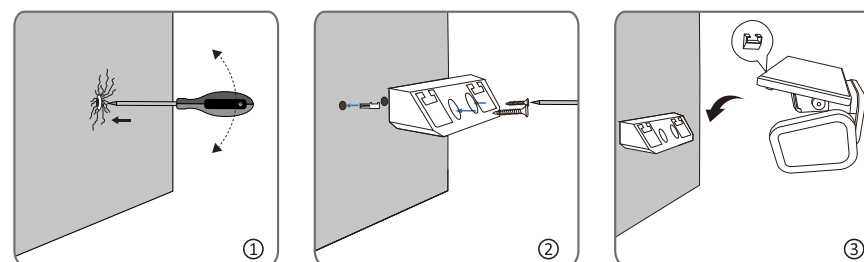
Components / Dimension



FRONT

High Light Solar Security Sensor Light PLU-144740

Installation



Step A: According to the spacing of two screw bits on the bracket, drill two mounting holes on the installation place. (Shown on figure 1)

Step B: Put the bracket onto the panel, match screw bits with the drilled holes and screw up. (Shown on figure 2)

Step C: Align the lamp body with the hole on the mounting bracket and buckle it directly. (Shown on figure 3)

Remote control function introduction

Mode 1: If movement is detected at dusk, the solar lamp lights up super bright. If no movement is detected, the solar lamp does not light up.

Mode 2: If movement is detected at dusk, the solar lamp lights up super bright. If no movement is detected, the solar lamp lights up weakly.

Mode 3: Solar lamp remain lights up weakly, regardless of whether movement is detected at dusk.

Mode switch button: 3 modes cyclically switch

Test Before Usage

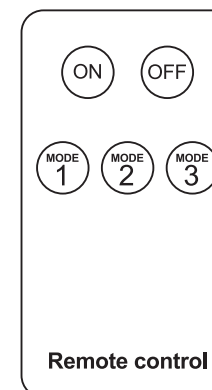
(1) The light should be exposed under direct sunshine for eight hours to ensure it's sufficiently recharged.

(2) Test the light by cover the solar panel.

(3) The switch should be set to ON before installation.

Tips

The detection distance depends on ambient temperature. If the ambient temperature is closer or higher than human body temperature, the detection distance is shorter, which means you need to get closer to be detected. If the ambient temperature is lower than human body temperature, the detection distance is farther.



the artful garden
Design. Transform. Enjoy.

CE UK CA IP65



OGALAS ULC
D12 ECR9
MADE IN CHINA

BACK